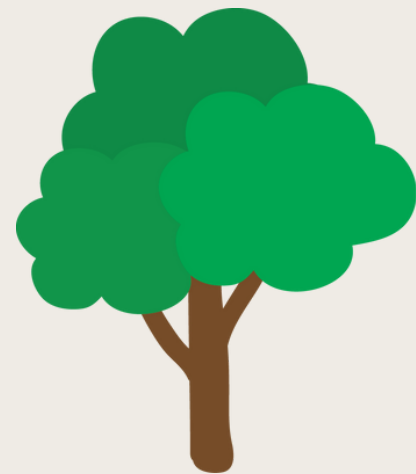


Tree Canopy & Workforce

Community Grant Opportunity



Faith in Place

People of Faith and Justice Protecting Our Earth

Our mission is to support and empower communities of faith driven to create a healthier environment. We provide free resources, education, networking, and actionable opportunities, fostering a sustainable future together.



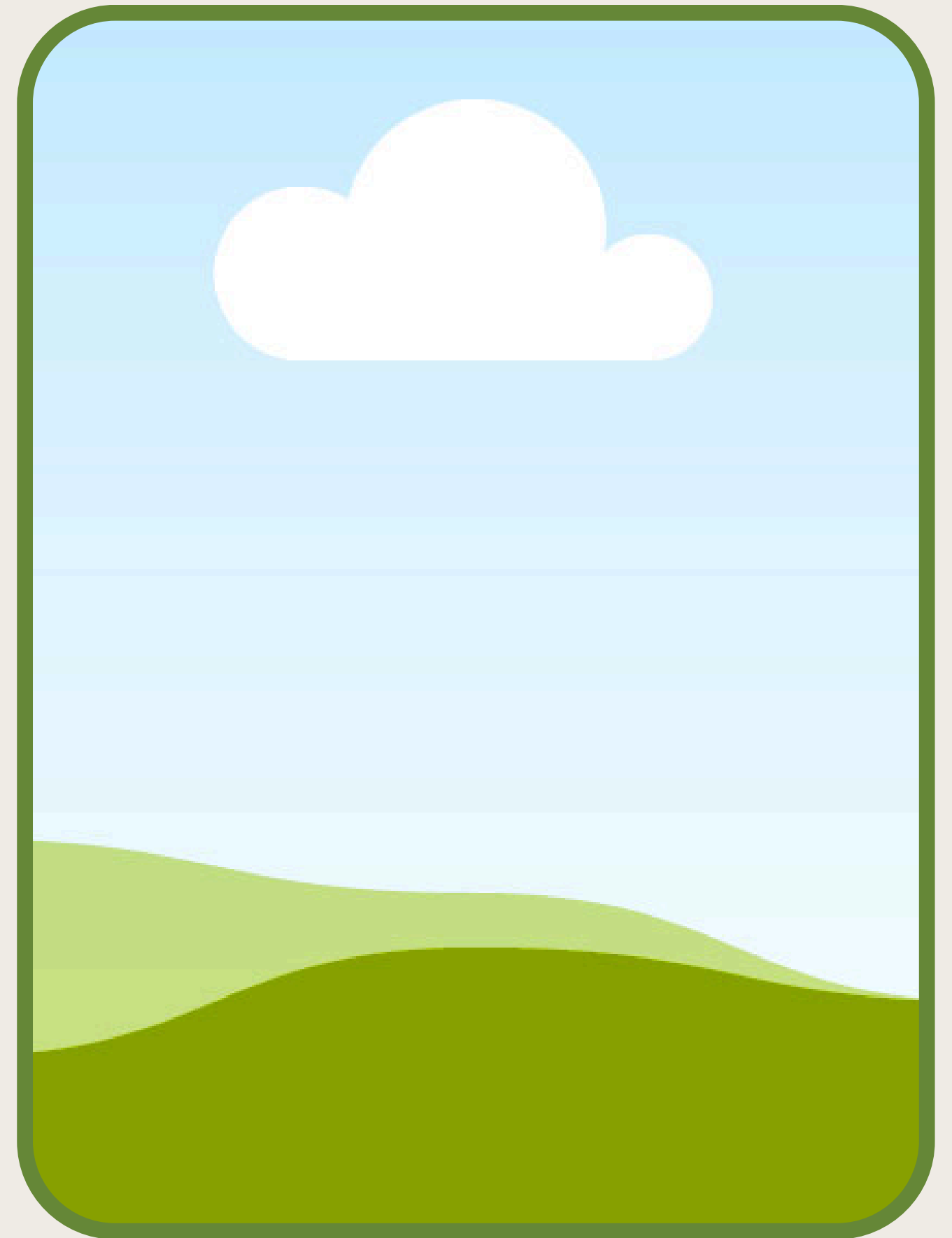
*Faith in Place is the proud Illinois, Indiana & Wisconsin Affiliate of Interfaith Power & Light
This institution is an equal opportunity provider.*



Presenter Name

Presenter Title Here

Add a descriptive bio here.





Today's Topic

Building Tree Canopy: How We Can Make Our Communities Greener

Ice Breaker

Share a story about a tree in your life.





We have an amazing opportunity to help communities plant trees.

Let's dive into some benefits these trees can offer.

“Trees play a critical role in creating healthier, safer, and more connected communities. They clean our air, filter our water, and even slow storm surge and flooding in our cities. Trees also provide shade and cool our cities by up to 10 degrees, which can help prevent heat-related deaths in urban areas.”

-Arbor Day Foundation

Tree Benefits: Physical Health

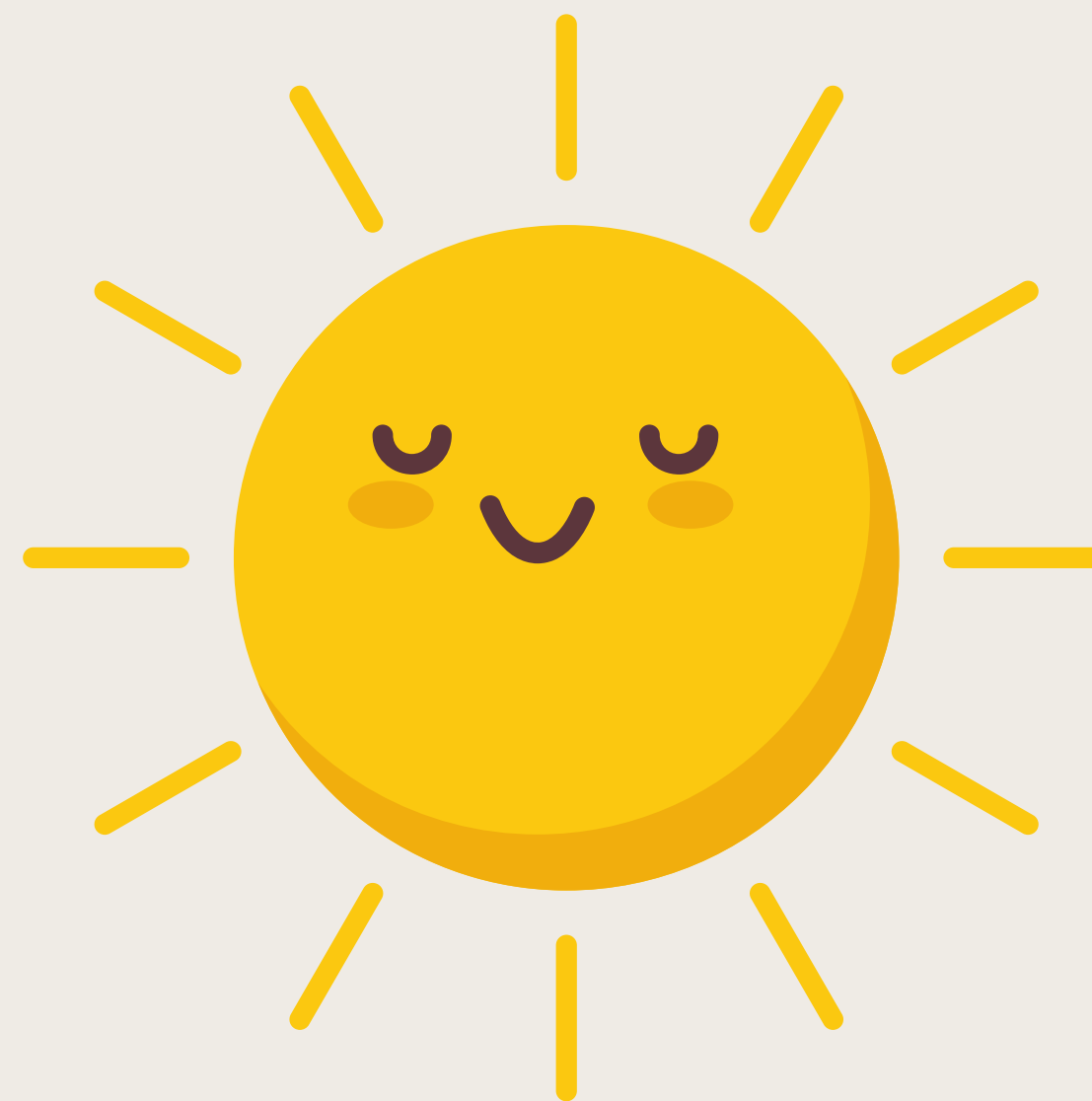


- **Cleaner Air**
 - Trees filter airborne pollutants and can reduce asthma conditions.
 - Trees can lower dust levels by 27–42%.
- **Increase Safety**
 - Well-maintained parks with trees can reduce gun violence and improve safety.
- **Less Heat-Related Illness**
 - Trees reduce heat-related illnesses by providing shade
- **Improved Cardiovascular Health in urban areas**

Source: US Forest Service

Tree Benefits: Mental Health

- Time in nature reduces stress by reducing our stress hormone cortisol and lowering blood pressure.
- Living about 300 feet from a tree can reduce rates of depression.
- Trees can help our brain function including enhancing our learning and thinking abilities.
- Green spaces can also help enhance our memory.



Source: Wisconsin DNR Forestry News

Tree Benefits: Energy Savings

- A young, healthy tree can cool air like 10 room-size air conditioners operating 20 hours a day.
- Trees strategically planted by buildings can reduce air conditioning needs by 30 percent. This can save us 20–50 percent in energy used for heating. Less energy used means lower energy bills!



Source: Friends for Tree Equity, IL

Tree Benefits: Economic Benefit

- Trees reduce annual heating and cooling costs for a typical residence by 8 to 12 percent and increase property values by 10 to 15 percent.

Source: Friends for Tree Equity, IL



Tree Benefits: Flooding Prevention

- **Less Flooding:**
 - Trees help manage stormwater by reducing the volume and speed of water entering drainage systems, decreasing the risk of flooding in urban areas.
- Over 20 years, 1 maple tree can intercept 27,000 gallons of rainfall and avoid 4,800 gallons of runoff



Source: Friends for Tree Equity, IL

Tree Inspiration Story





First Presbyterian Church

Danville, IL

“The [tree planting] project is concerned with improving air quality by planting more trees, particularly native species, because natives thrive rather than just exist.”

-Church Member, Claudia Ferrell

“Planting trees is a holy and hopeful act. They provide refuge for birds and animals, shade for the neighborhood, and beauty and oxygen for us all.”

*-Rev. Ann Schwartz,
Pastor of First Presbyterian Church*

Danville, IL





Shelbyville Community Garden

*First Presbyterian Church in
Shelbyville, IL*

Image Source: Shelbyville Community Garden Facebook Page



Let's Dive into the Practical Side of Tree Planting

Common Tree Concerns



Trees Attracting Rodents
and Insects

Cost for Planting,
Maintenance, or Removal

Trees Can Cause Property
Damage to Sidewalks and
Buildings

Trees Increasing Allergies

The Labor Needed to Care
for Trees, Rake Leaves,
Etc.

Trees Can Provide Cover
for Crime or Block the
View

Addressing Tree Concerns



Some tree species can actually extend the life of pavement by reducing the heating/cooling of asphalt

This grant covers the cost of purchasing and planting trees.

Proper selection and planting of tree species can minimize the risk to building foundation and sidewalks from root growth.

You can select low-pollen or non-allergenic trees to reduce allergy risk

This Grant Covers the Cost of Tree Maintenance for the first 5 years of growth.

Thoughtful tree placement can avoid blocking the view or line of sight



Weighing the Pros and Cons For Your Community

Let's share together

About this Opportunity

Faith in Place will distribute 65 to 85 grants, each up to \$30,000, to community organizations and Houses of Worship within environmental justice communities across Illinois, Wisconsin, and Indiana. These grants are intended for planting and maintaining trees on their properties over a four-year period, for urban forestry workforce projects, or a combination of both.



This opportunity is made possible by the U.S. Department of Agriculture, Forest Service and is funded through the Inflation Reduction Act.

Who Can Apply?

- Community organizations must be 501(c)3s. Houses of Worship do not.
- The organization/House of Worship MUST be located in a CJEST Census Tract.

We will learn how to check this next.

- If you are an organization with a fiscal sponsor, the sponsor's address must be located in a CJEST community.
- The organization must own their property or be able to get written permission from the owner to plant trees (template will be provided)
- Your Organization's Employees must have I-9 forms on record.



CJEST Map Demonstration



Link in Chat to Mapping Tool is in the Chat:
<https://screeningtool.geoplatform.gov/en/>

Let's test 2 Houses of Worship

- 1) Check Congregation Or Shalom
21 Hawthorn Parkway, Vernon Hills, IL 60061
- 2) Check Stone Temple Missionary Baptist Church
3622 W Douglas Blvd, Chicago, IL 60623



Now! Let's Check Your Eligibility!



Link in Chat to Mapping Tool is in the Chat:

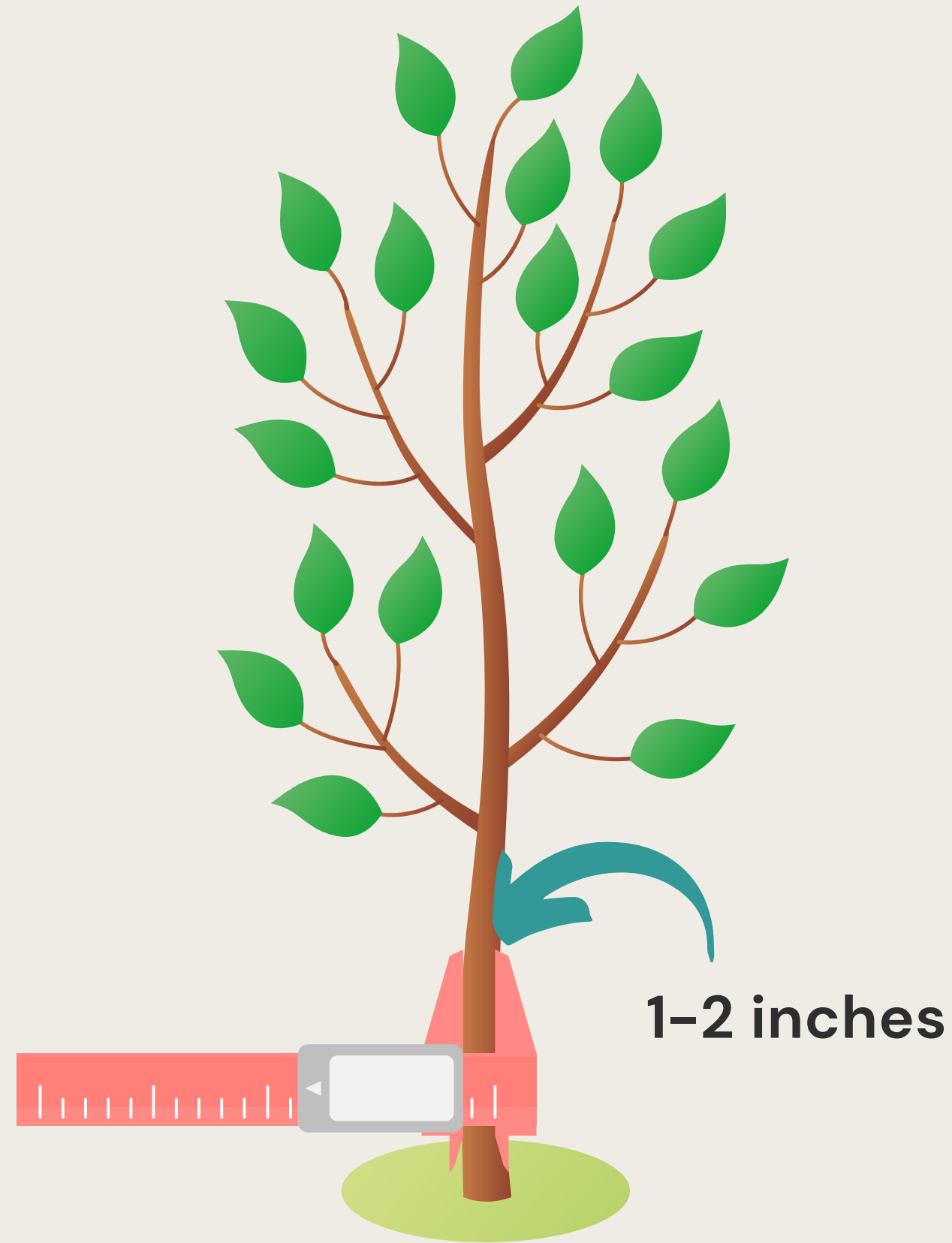
<https://screeningtool.geoplatform.gov/en/>



You are eligible?

Next steps: How to prepare & submit your proposal

[Review the Application Toolkit](#)



What To Plant?

Tree Size

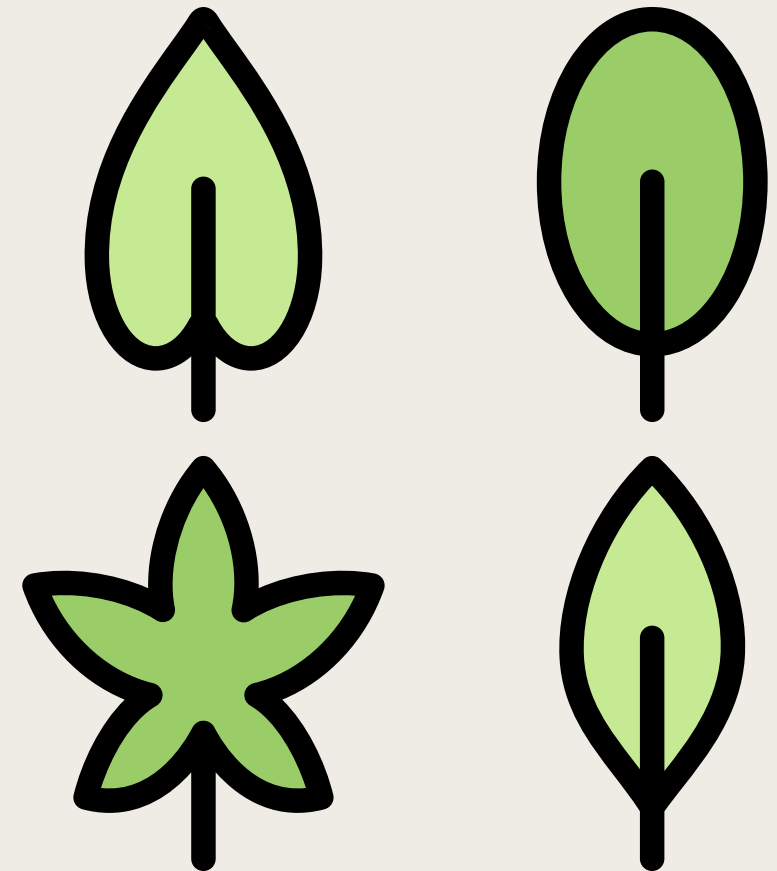
- 1-inch (about 8 ft tall, depending on species) to 2-inch caliper (about 12-14 ft tall, depending on species)

What To Plant?

Tree Type

- The Best Tree Option Depends on Location
- Non-Invasives only

Let's Review the Allowable Tree Species List



What Can You Charge To The Grant?



What, In Addition to Trees, You Can Include On Your Budget

- Eligible Tree Planting Supplies: *Review Allowable List*
- Eligible Activities: *Review Activities List*

Review Budget Template





Tips for Planting

We recommend watching this [10 minute tutorial](#) from our friends at Openlands if you are not familiar with the best practices for planting a tree (linked on our website's resource page for this opportunity)

Tips for Planting: Planning

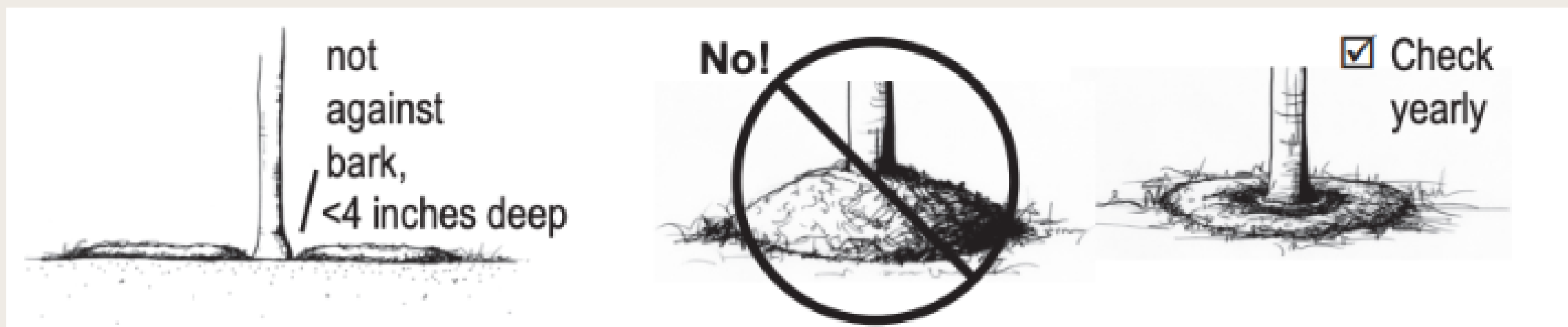


- **Call First!** At least 72 hours before planting, CALL (1-888-258-0808) underground utilities to ensure your area is safe to dig.
- **Test Soil:** If you want to plant edible fruit/nut trees, conduct a soil test before planting to avoid unwanted contamination.
- **Prevent Damage to Paved Areas/ Walkways:** Prevent roots lifting pavement by planting NO CLOSER than 2 feet from paved areas, and preferably, at least 5 feet.

Tips for Planting: Maintenance



- **Mulch:** Mulch trees in a donut pattern. Don't pile mulch near the trunk like a volcano (see image below).
- **No Fertilizer:** Don't use fertilizer or compost for your tree.
- **Watering (Most Important Part!):** Plan to water your tree 15 gallons per week during the growing season for 3 years. Learn how in [this video](#) from Openlands. After that, they only require water during a drought.



From the US Forest Service's Tree Owner's Manual

Additional Tips For Your Proposal



- **Budget Tips**

- Plan on using 25% of your budget for or tree planting and 75% for tree keeping/maintenance. Use the template provided.

- **Incorporate workforce component for higher application score**

- Examples: Educate community on arborist/forestry career opportunities, hire maintenance companies with a workforce that welcomes individuals returning from the prison system
- We have a partner who would love to partner with your organization/House of Worship to share about tree career opportunities and support your application. You can find their information on our website.

Timeline For Applications



You must submit a eligibility questionnaire to be able to apply. Those eligible will be sent a link to our grant portal.

Through the grant portal, you will submit your application information we just went over starting September 1, 2024. The deadline to submit is November 21, 2024.

Applications will be reviewed and winners will be announced by January 15.

You will then get a contract to sign and we will disperse funds for you to get started.

You will then report in every month using a short report form or by connecting with our **Grants Management Coordinator**, Angie Wiliford.

Additional Resources Available

Website Resource Page





Q&A

What questions do you have?

Closing

All materials covered today and recordings of a presentation like this are available on our website & will be emailed to you if you signed in or registered for this event.



Join Us!

You are invited to join us at Faith in Place's
Annual Environment and Spirituality Summit
September 22-24.

It is free to attend and all sessions are available on Zoom.



Learn More and Register:
www.aes-summit.org

Keynote Speaker Lama Rod Owens